

**LS-4600**

## A0 Large-Size Scanner

- Scanning area is up to A0 size (841 mm x 1189 mm)
- Adopted with a linear CCD sensor, ensuring superior image quality
- Optical resolution is up to 600 dpi, accomplishing requirements of digitizing of large-size pictures easily
- Single image sensor prevents occurring of errors for image stitching
- Two-way LED light source decreases shadows of folded materials effectively
- High-speed USB interface is easy to install
- Bundled with exclusive, multifunctional and easy-to-use ScanWizard Graph software



# LS-4600

Microtek's LS-4600 is a scanner which is exclusively designed for capturing large-size pictures. It is equipped with a large A0 scan bed, supporting scanning area up to 841 mm x 1189 mm; therefore, you can process scanning of large-size materials easily. Adopted with a high-resolution color linear CCD, generation 600 dpi resolutions and 24-bit color depth in every inch, LS-4600 delivers fantastic experiments of image scanning to you and guarantees superior color quality at the same time. There is no doubt that LS-4600 is your first and best choice for digitizing large-size materials, such as old pictures, books and historical painting albums.

## Single image sensor prevents occurring of errors for image stitching

Adopted with a high-standard optical image component, LS-4600 can capture an A0-size image by single lens, preventing occurring of errors for image stitching generated by dual lens.

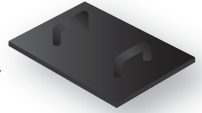
## Two-way LED light source decreases shadows of folded materials effectively

LS-4600 provides you with fantastic experiments of large-scale images scanning, such as historical documents and data processing and guarantees superior color quality at the same time.

Optional

## An optional board is exclusively designed for flattening large-size drawings

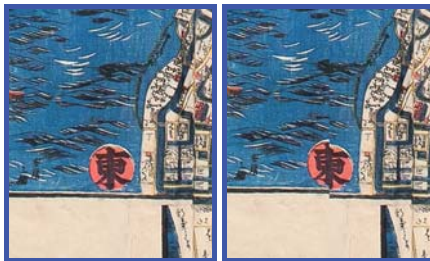
To use an optional mobile board together with the flat scan bed, LS-4600 lets users to flat folded or creased materials to scan easily.



Optional

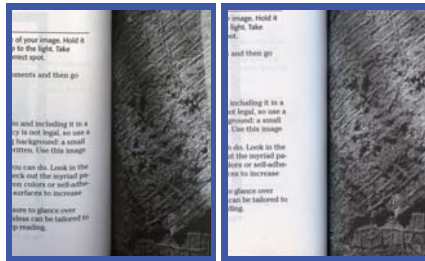
## Trolley with attached casters for easy movement

To use an exclusive trolley with attached casters came with the package, users can stabilize LS-4600 on the ground easily. Also, if necessary, it can be moved around conveniently.



▲ No image stitching

▲ Errors of image stitching



One-Way Light Source

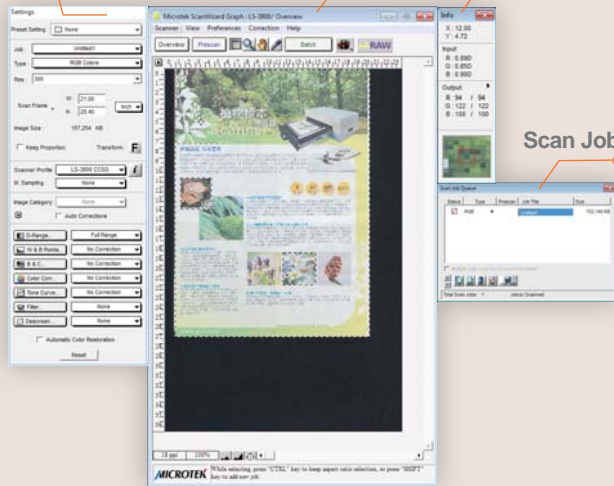
Two-Way Light Source

### Settings Window

### Preview Window

### Information Window

### Scan Job Queue Window



## Exclusive ScanWizard Graph Software for Scanning Large-Size Materials

### Multifunctional and Easy-to-Use

ScanWizard Graph is software exclusively designed for users who have needs to capture large-size pictures. It is provided with multifunctional and professional scanning and image adjusting tools, ideal for AD printing, art designing, library managing, image processing and constructing.

- Customizing formats of output files
- Image Flipping/Inverting
- Descreen
- ICC profiles
- Advanced Image Correction tools
- Auto contrast
- Auto black/white points tool
- Brightness/contrast tools
- Tone Curve tool
- Filter effects

## Specifications

Scanner Type	Floor flatbed scanner
Image Sensor	Color linear CCD
Optical Resolution	600 dpi
Light Source	LED
Color Depth	24-bit
Color Mode	Color / grayscale / b&w
Accuracy	± 1 %
Scanning Area	841 mm x 1189 mm (33.1" x 46.8")
Scanning Speed	60 sec @ 300 dpi, A0/Color
Output Formats	TIFF, BMP, JPEG, JPEG 2000 and PDF

Interface	Hi-Speed USB (USB 2.0)
Dimensions (LxWxH)	169 cm x 110 cm x 43 cm (Without the trolley)
Weight	About 170 kg (Without the trolley)
Voltage	AC 100V~240V
Environment	25°C (+/- 10°C)

## System Requirements

- CD-ROM drive (for installing software)
- Color display card and color monitor
- High-speed USB 2.0 port
- 8 GB RAM or above
- CPU: Intel Core i5 processor or above
- Operation System: Microsoft Windows 7/8/10 (64-bit)

\* For more details on product, please contact your local Microtek sales or dealers.

## MICROTEK INTERNATIONAL, INC.

No. 6 Industry East Road 3, Science-Based Industrial Park, Hsinchu 30075, Taiwan  
Tel: +886-3-577-2155 Fax: +886-3-577-2598 <http://www.microtek.com>

**MICROTEK**  
SCAN THE WORLD