

SG Audio Visual Product Specification

| | |
|-----------------|--|
| SGIAW300 | 136" Premium Ceiling-Recessed Electric screen for Home Cinema |
|-----------------|--|

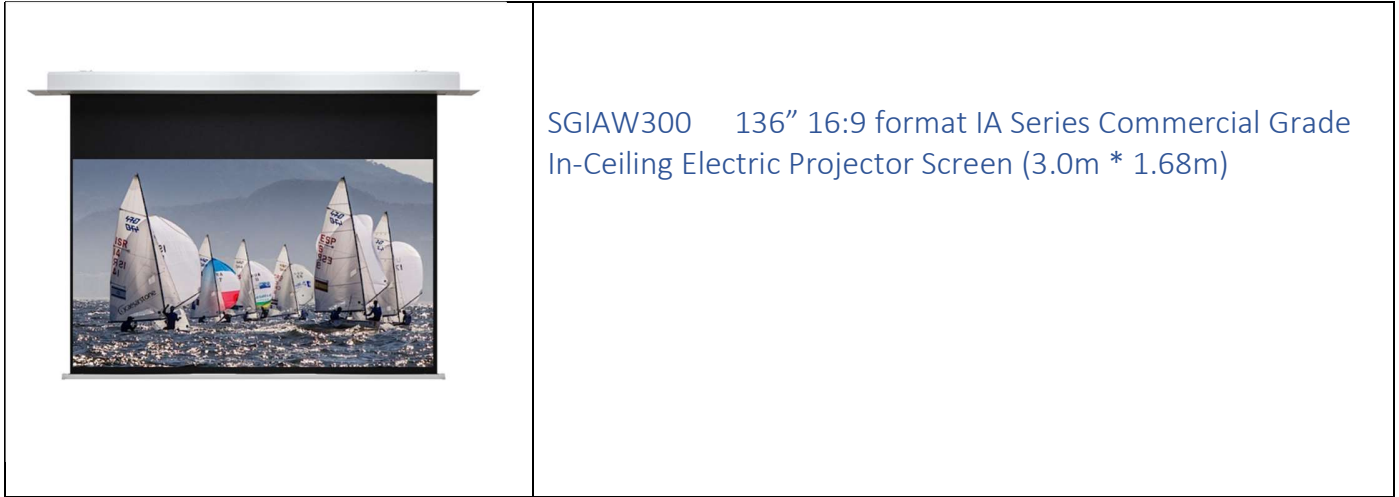
| | |
|-----------------|--|
| General | |
| Recommended Use | Perfect for larger sized rooms (at least 3.5m wide and 5m long) where the screen is to be concealed within the ceiling space and there is some lighting control. |
| Compatibility | Suitable for 4K and 1080p projection. Not suitable for ultrashort projectors. |

| | | | |
|-----------------------|---|--|------------------|
| Screen Surface | | | |
| Material | Matte White Premium Fiberglass with lightproof black backing. 1.1 gain with 165 degree viewing angle. | | |
| Overall Surface | W: 300cms | H: 168.7cms / 218cm with max. black leader | Diag: 136 inches |
| Viewable Surface | W: 292cms | H: 164cms | Diag: 132 inches |
| Black Leader | 50 cms top adjustable via limit control | | |
| Border | 4cms left and 4cms right | | |

| | | | |
|--------------------|--|------------|--------------|
| Housing | | | |
| Material | Aluminium alloy (larger housing) | | |
| Colour | White | | |
| Housing Profile | Rectangular with bottom flange | | |
| Housing Dimensions | W: 11cms | H: 12.5cms | L: 317.8 cms |
| - Including flange | W: 16cms | H: 12.5cms | L: 317.8 cms |
| Cut-out Size | 13.5 cms * 336.8cms (if access panels fitted) | | |
| Weight | 24kg Gross / 22kg Net | | |
| Installation Kit | Mounting brackets and 1m threaded rods included. Rods may be cut to size. Access panels may be fitted to each end of the housing and are included. | | |

| | |
|-------------------------------|--|
| Electrical and Control | |
| Wireless Remote | RF remote included. |
| Wireless Wall Switch | RF wall switch included |
| Wifi control | Standard. Download Smart Life app. |
| Low voltage Control | Standard. Control cable is optional |
| Motor | Premium tube motor |
| Motor location | Left Hand side |
| Power | 220V~240V, 50Hz, Power cord 2m (Removable) |

| | |
|-------------------|-----------------------------|
| Warranty | |
| Standard Warranty | 2 years |
| Extended warranty | 1 additional year available |



IA Premium Ceiling Recessed Screens

SG Audio Visual IA Series intelligent projection screens are commercial grade in-ceiling screens. They feature a stretch-resistant fiberglass surface, aluminium alloy housing, intelligent control system and premium tube motor. There is a lip or flange on each side of the screen which butts up to the gyrock or to tiles in a false ceiling concealing all except the underside of the screen housing. The system is supplied with remote control, wireless wall switch, power cable, ceiling access panels and an in-ceiling mounting kit. The IA series supports wi-fi control via a mobile phone app.

The IA Series are not recommended for ultra-short projectors.

Projection Surface

The matte white fiberglass surface provides a good 1.1 gain and wide 165 degree viewing angle. The black backing ensures that it is lightproof.

This surface is designed for UHD/4K projection but will also perform well with WUXGA/1080p projection.

The 50cm long black leader on these screens may be adjusted to ensure that the viewable white surface is at a comfortable viewing height.

Screen Dimensions

This 136" IA Series screen has a 3.0m wide fiberglass surface with an overall drop of up to 2.18m including the 50cm black leader. After allowing for the 4cm black border the image size supported is approximately 2.92m * 1.64m. The slimline housing is only 16cms wide including the flange and 12.5cms high and the screen has an overall length of 317cms excluding the ceiling access panels.

We would normally recommend this screen for a home cinema room at least 3.5m wide and 5m deep. This screen is not suitable for ultra-short projectors.



Intelligent Control System



Wireless Wall Switch and Remote Control

Each IA Series screen ships with both a wireless remote control and a wireless wall switch. The wireless wall switch provides easy installation of a switch to control the projector screen without the need for additional cabling.

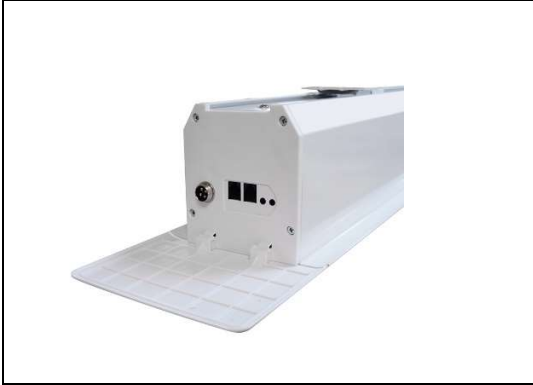
Wi-Fi control

The intelligent control system also supports wireless IP control via the Smart Life app and a phone or tablet with additional voice control support via most smart speakers including Google Nest and Alexa.

Other Control Options

Standard control is via RF remote control and RF wall switch or Wi-Fi. Optional control components include IR remote control, 5V low voltage wired switches and 12V cables and connectors for serial (RS485) connection to control systems, PCs and projectors (via trigger port).

Housing

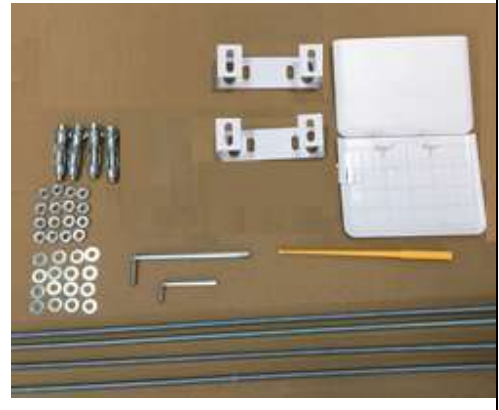


The IA Series housing is a slimline Aluminium alloy housing with a flange on the sides and removable ceiling access panels at each end providing access to the mount and control system. When correctly installed the screen is discretely hidden in the ceiling cavity with only the underside visible.

Mounting Kit and Ceiling Access Panels Included

The IA Series screens include a mounting kit with brackets and threaded rods allowing the screen to be mounted in both ceiling cavities and in drop ceilings.

The two access panels included which can be connected to each end of the screen housing. This allows for easy access to the screen for relocation or maintenance.



Warranty

This product comes with a two-year manufacturer's warranty.

Associated Products

| | |
|--------------|--|
| SGSZTRIGGER | Trigger Cable suit IA/IT/HE series screen |
| SGSZSWITCH | Wired Switch for IA/IT/HE series screen |
| SGSZIRREMOTE | IR Remote control for IA/IT/HE Series |
| SGIASWARR1YR | Additional 1 year warranty for IA series screen under 3m (total 3 years) |