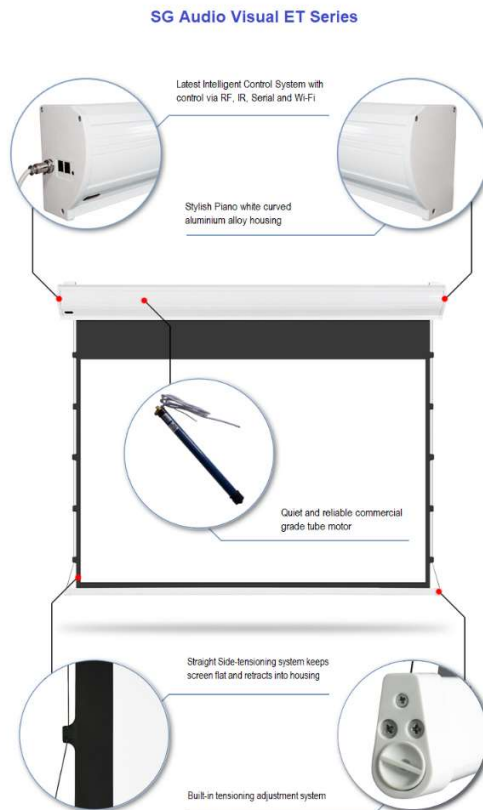




ET Premium Ceiling Recessed Screens

SG Audio Visual ET Series intelligent projection screens are commercial grade side-tensioned electric screens. There are models with either an ALR grey surface, CLR surface, rear or white projection surfaces. The side tensioning system keeps the screen surface flat and provides for even retraction of the surface into the housing. The ET series also features an aluminium alloy housing, intelligent control system and premium tube motor. The system is supplied with remote control, wireless wall-switch and power cable and supports wi-fi control via a mobile phone app.



Screen Surface

The translucent grey rear projection surface is based upon PVC with a 1.5 gain and a wide 165 degree viewing angle.

Screen Dimensions

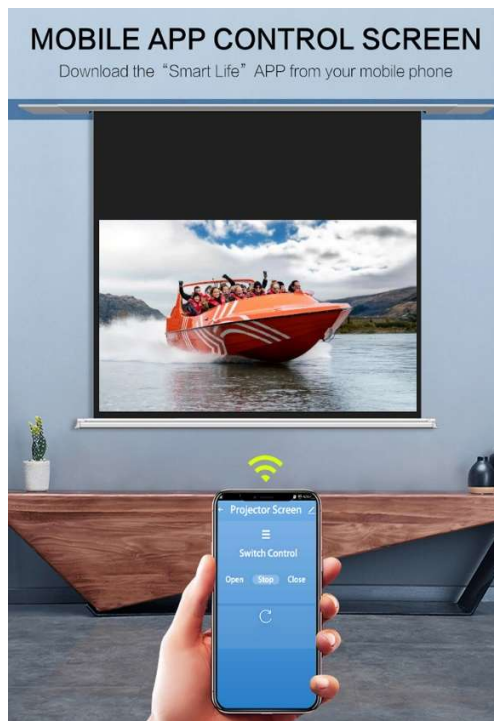
This 136" ET Series 16:9 format screen has a 3m wide grey rear surface with an overall drop of up to 2.18m including the 50cm black leader. The rear surface is recommended where there is enough space behind the screen to place the projector. Please check the throw ratio of the projector and space available.

After allowing for the 6.5cm black border the image size supported is approximately 2.88m * 1.6m. The slimline housing is only 13.5cms wide including the flange and 10.9cms high and the screen has an overall length of 3.2m.

We would normally recommend this screen for a medium sized meeting room at least 4m wide and 5m deep.

This model is suitable for ultra-short projectors.

Intelligent Control System



Wireless Wall Switch and Remote Control

Each ET Series screen ships with both a wireless remote control and a wireless wall switch. The wireless wall switch provides easy installation of a switch to control the projector screen without the need for additional cabling.



Wi-Fi control

The intelligent control system also supports wireless IP control via the Smart Life app and a phone or tablet with additional voice control support via most smart speakers including Google Nest and Alexa.

Other Control Options

Standard control is via RF remote control and RF wall switch or Wi-Fi.

Optional control components include IR remote control, 5V low voltage wired switches and 12V cables and connectors for serial (RS485) connection to control systems, PCs and projectors (via trigger port).

Housing and Mounting Brackets	
	<p>The ET Series features a slimline white Aluminium alloy housing with a curved front face</p> <p>The side-tensioning system is retracted within the housing so that only part of the weight bar is visible.</p>
	<p>The ET series floating mount system allows the L Shaped brackets to be positioned at any point along the rear/top of the housing providing a highly flexible mounting solution.</p>

Warranty

This product comes with a two-year manufacturer's warranty.

Associated Products

SGSZTRIGGER	Trigger Cable suit IA/IT/HE series screen
SGSZSWITCH	Wired Switch for IA/IT/HE series screen
SGSZIRREMOTE	IR Remote control for IA/IT/HE Series
SGITSWARR1YR	Additional 1 year warranty for IT series under 3m wide (total 3 years)

SG Audio Visual Product Specification

SGETW300R	136" Tensioned Rear Projection Electric screen for Business and Education
------------------	--

General	
Recommended Use	Perfect for medium-sized rooms (at least 4m wide and 5m long). Grey Rear Projection fabric allow the projector to be positioned behind the screen and the image to be viewed from the front.
Compatibility	Suitable for 4K and WUXGA projection. Suitable for all projectors including ultrashort projectors.

Screen Surface	
Material	Translucent Grey fabric with 1.5 gain and 165 degree viewing angle.
Overall Surface	W: 315cms H: 169cms Diag: 136 inches
Viewable Surface	W: 292cms H: 164cms Diag: 132 inches
Black Leader	50 cms top adjustable via limit control
Border	6.5cms left and 6.5cms right

Housing	
Material	Aluminium alloy
Colour	White
Housing Profile	Rectangular with curve on front face
Housing Dimensions	W: 8.6cms H: 10.9cms L: 330 cms
Weight	40kg Gross / 35kgs Net

Electrical and Control	
Wireless Remote	RF remote included.
Wireless Wall Switch	RF wall switch included
Wifi	Standard. Download app with voice control options.
Low voltage Control	Standard. Control cable is optional
Motor	Premium tube motor
Motor location	Left Hand side
Power	220V~240V, 50Hz, Power cord 2m (Removable)

Warranty	
Standard Warranty	2 years
Extended warranty	1 additional year available