

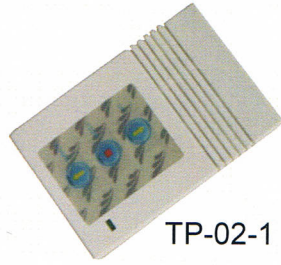
TP-06-1 交流触发遥控器

TP-06-1 AC TRIGGER REMOTE CONTROL

使用说明书V1.0 MANUAL V1.0



TP-06-1



TP-02-1

功能特点 — SPECIFICATIONS

- 触发灵敏可靠 Quick reaction
- 符合安规设计 Comply with security design
- 元器件采用精密SMT贴片工艺 SMT assembly

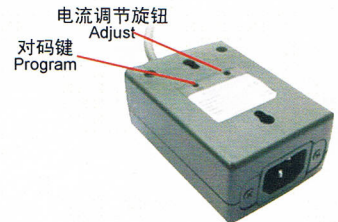
主要技术参数 THE MAIN TECHNIQUE PARAMETERS

| 产品型号 Model No. | 供电电压 Rated Voltage | 触发电流 Trigger current | 工作温度 working Temp | 发射频率 Frequency | 发射功率 Transmit Power | 负载功率 Loading Power |
|-------------------|--|-------------------------|----------------------|---------------------------------|------------------------|-----------------------|
| TP-06-1 | 230VAC 50HZ 可选 Optional 120VAC 60Hz | ≥ 500mA | -40℃~+85℃ | 315MHZ 可选 Optional 433.92MHz | ≤ 10mW | ≤ 1500W |

电源与接线图示 — WIRING



用途：用于调节触发器电流大小
方法：顺时针调节减小电流触发值
逆时针调节增加电流触发值
Application: Used to adjust current value;
Operation: clockwise-reduce current;
Anti-clockwise-add current.



学码设置 — PROGRAM



触发动作 — TRIGGER

