



# drobo

## Drobo 5N2

### The Next Era of Simplified Storage for Your Connected Home or Small Office

The latest generation 5 Bay NAS, the Drobo 5N2 delivers an unparalleled user experience for data sharing, secure backup, remote access and disaster recovery solutions. The 5N2 is the fastest, network attached Drobo available to prosumers and provides up to 2x performance boost with an upgraded processor and port bonding option. By implementing a level of automation usually preserved for more expensive solutions, and still maintaining the award-winning simplicity found in all Drobos, the 5N2 is the easiest to use NAS on the market.

Drobo 5N2 is designed to optimize and simplify workflow in connected homes and small office environments using Drobo's simple, safe and smart BeyondRAID™ technology. Using the solution as a central backup in a connected home, multiple computers can speedily access the rich media files. Small office environments can utilize secure file sharing and Drobo's Disaster Recovery (DR) feature to automatically backup the data to an offsite 5N2. To extend the functionality of the Drobo, 5N2 is compatible with the myDrobo App Platform, allowing for remote access to data, media streaming and cloud backup.

#### Data Protection and Expandability Made Simple

Built on award-winning BeyondRAID™ technology with single- or dual-drive redundancy, Drobo 5N2 protects your data without any user interaction, even in the event of multiple drive failures. In addition, Drobo's simplicity provides a quick, seamless setup and software configuration is not required to access storage on your network.

Drives can be added or hot-swapped and updated in real time for storage expansion with zero downtime. Just add a drive in an empty bay or remove a smaller drive and replace it with a larger one, when needed.

#### High-Speed Connectivity

The Drobo 5N2 is equipped with dual Gigabit Ethernet ports for network connectivity and makes sharing your data easy by connecting directly to the network. The two ports provide bonding support, also known as Adaptive Link Bonding, for link failover and aggregation without Ethernet switch support. This increases performance and compensates for network connection problems.

#### Capacity AND Performance

Usually reserved for larger enterprise-class storage solutions, the Drobo 5N2 gives you the option to implement Hot Data Caching through the Drobo Accelerator Bay. This feature intelligently uses high-performance flash to accelerate performance, allowing the fastest possible access to your data.

#### The myDrobo Platform

The myDrobo platform extends the functionality of Drobo NAS devices by providing a secure and fully end-to-end encrypted path to selected Drobo Apps.

The iOS and Android app, DroboAccess, allows Drobo NAS owners to access their data anywhere, anytime through a secure and encrypted network. This allows Drobo consumers and SMBs to quickly and easily setup their own private cloud storage solution with the ability to view documents from a web browser or from the DroboAccess mobile app.

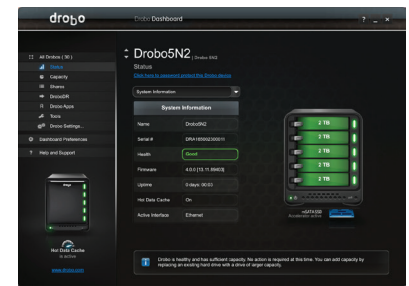
DroboPix app allows owners to easily and automatically upload their photos and videos from their Android or iOS device to a network Drobo. The files are automatically uploaded over Wi-Fi and are securely backed up and protected on a Drobo.

#### Power Protecting Your Critical Data

Drobo doesn't just protect you from a drive failure, but also from potential data loss after a power outage. Drobo 5N2 includes a battery

### Drobo Dashboard

Drobo Dashboard is the single tool used to centrally manage all of your Drobo devices. Drobo Dashboard displays status as if all of your Drobos were right in front of you with the same status lights and capacity gauge that are on the front panel. All administration tasks are a single click away.



that protects all data in memory, or cache, that is, data on its way to the drives. When power spontaneously goes away, the battery keeps the Drobo alive long enough for the data to be written to non-volatile storage.

#### Drobo Disaster Recovery

With Drobo DR you can set up a pair of 5N2s to automatically make an offsite copy of your data. Simple to set up and manage, the reliable DroboDR seamlessly replicates your data to another 5N2 ensuring data availability in case of disaster. Even better, the remote 5N2 stores all user account information so recovery is painless.

#### Designed for You

Drobo devices have always been space efficient and the Drobo 5N2 is no exception. It was designed from the ground up to provide very high capacity without taking up a lot of your valuable desk space. It is compact because of Drobo's unique carrierless drive-bay design, allowing drives to be installed very close to each other.

Drobo 5N2 is also the quietest Drobo ever due to its tuned, large, variable-speed cooling fan.

## Specifications

<b>Connectivity</b>	– 2 x Gigabit Ethernet ports	<b>Warranty</b>	– Two (2) year warranty
<b>Drives and Expansion</b>	<ul style="list-style-type: none"> <li>– Up to five (5) 3.5" SATA II/III hard disk drives or solid state drives (sold separately).</li> <li>– One (1) mSATA solid state drive in the Drobo Accelerator Bay for increased performance (sold separately).</li> <li>– Drives of any manufacturer, capacity, spindle speed and/or cache can be used. No carriers or tools required.</li> <li>– Expandable by adding drives or hot-swapping drives with larger ones.</li> </ul>	<b>Additional Software Features</b>	<ul style="list-style-type: none"> <li>– Hot Data Caching</li> <li>– DroboApps</li> <li>– myDrobo compatible</li> <li>– Drive Spin Down</li> <li>– Dim Lights</li> <li>– OS X / macOS Time Machine Support</li> <li>– Cloud access</li> </ul>
<b>BeyondRAID Features</b>	<ul style="list-style-type: none"> <li>– Thin Provisioning</li> <li>– Instant Expansion</li> <li>– Mixed Drive Size Utilization</li> <li>– Automatic Protection Levels</li> <li>– Single or Dual Disk Redundancy</li> <li>– Virtual Hot Spare</li> <li>– Data Aware</li> <li>– Drive Re-ordering</li> <li>– 64TB filesystem support</li> </ul>	<b>Size and Weight</b>	<ul style="list-style-type: none"> <li>– Desktop Form Factor</li> <li>– Width: 5.9 in (150.3 mm)</li> <li>– Height: 7.3 in (185.4 mm)</li> <li>– Depth: 10.3 in (262.3 mm)</li> <li>– Weight: 8.5 lb (3.9 kg) without hard drives, power supply or packaging</li> </ul>
<b>Management</b>	<ul style="list-style-type: none"> <li>– Drive bay indicator lights, capacity gauge, status lights</li> <li>– Drobo Dashboard version 3.0.x or later</li> </ul>	<b>Power and Cooling</b>	<ul style="list-style-type: none"> <li>– External Power Supply: <ul style="list-style-type: none"> <li>• AC Input – 100-240VAC~2A, 50-60Hz</li> <li>• DC Output – 12V, 12.5A, 84W max</li> </ul> </li> <li>– Fixed, 120mm variable speed cooling fan</li> </ul>
<b>Operating System Support</b>	<ul style="list-style-type: none"> <li>– Apple® macOS X 10.10 and higher</li> <li>– Microsoft® Windows® 10</li> <li>– Microsoft® Windows® 8</li> <li>– Microsoft® Windows® 7</li> </ul>	<b>Environmental Specifications</b>	<ul style="list-style-type: none"> <li>– Acoustics – Normal Operation: &lt;30.4 dB</li> <li>– Operating Temperature: 10°C – 35°C (50° – 95°F)</li> <li>– Non-Operating Temperature (storage): -10° – 60°C (14° – 140°F)</li> <li>– Operating Humidity: 5% – 80%</li> </ul>
<b>Network Protocols</b>	<ul style="list-style-type: none"> <li>– Common Internet File System (CIFS) / Server Message Block (SMB)</li> <li>– Apple Filing Protocol (AFP)</li> </ul>	<b>Box Contents</b>	<ul style="list-style-type: none"> <li>– Drobo 5N2</li> <li>– 2x 6 ft (1.8 m) Ethernet cable</li> <li>– 6 ft (1.8 m) power cord with power supply</li> <li>– Quick Start Card</li> </ul>
<b>Hardware Features</b>	<ul style="list-style-type: none"> <li>– Carrier-less drive bays</li> <li>– Power fail protection with internal battery</li> <li>– Metal chassis and cover</li> <li>– Kensington Lock Port for security (lock not included)</li> </ul>	<b>Ethernet Features</b>	<ul style="list-style-type: none"> <li>– Connection failover and Adaptive Link Bonding</li> <li>– Jumbo frames (up to 9000 bytes MTU)</li> </ul>

## How to Choose the Right Drive

Drobo gives you the flexibility to use a wide variety of drive types and capacities. To find out which drive is right, visit [www.drobo.com/products/choose-drive](http://www.drobo.com/products/choose-drive)

## More Information

For more on Drobo's innovative technology, visit [www.drobo.com/how-it-works](http://www.drobo.com/how-it-works)

Read about Drobo BeyondRAID at [www.drobo.com/how-it-works/beyond-raid](http://www.drobo.com/how-it-works/beyond-raid)

For more on Drobo Apps, visit: [www.drobo.com/drobo-solutions/drobo-apps/](http://www.drobo.com/drobo-solutions/drobo-apps/)

Learn more about myDrobo platform at [www.drobo.com/mydrobo-platform/](http://www.drobo.com/mydrobo-platform/)



2540 Mission College Blvd., Santa Clara, CA 95054 USA  
www.drobo.com • +1.408.454.4200